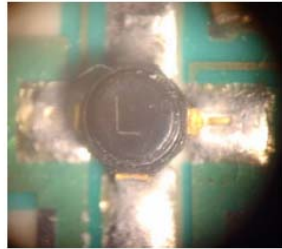


Gaasfets

Current production



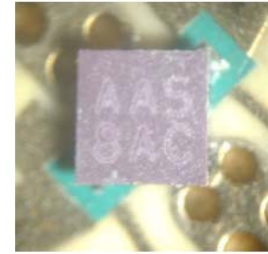
NEC NE4210S01

Gain: 13dB @ 12GHz
 NF: 0.5dB @ 12GHz
 Ptot: 165mW



NEC NE3210S01

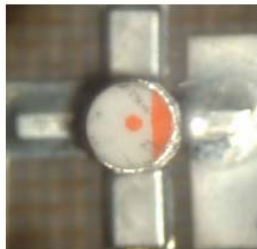
Gain: 13.5dB @ 12GHz
 NF: 0.35dB @ 12GHz
 Ptot: 165mW



Mitsubishi MGF4941AL

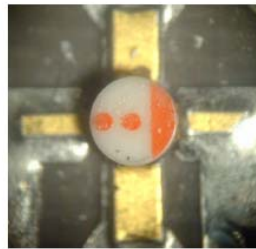
Gain: 13.5dB @ 12GHz
 NF: 0.35dB @ 12GHz
 Ptot: 50mW

Replacement status



NEC FHX05LG

Gain: 10.5dB
 NF: 0.9dB
 Ptot: 180mW



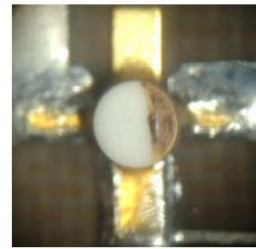
NEC FHX06LG

Gain: 10.5dB
 NF: 1.1dB
 Ptot: 180mW



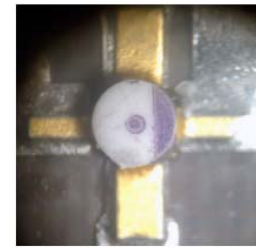
Mitsubishi MGF4918D

Gain: 9.5dB
 NF: 0.6dB
 Ptot:



NEC FHX35LG

Gain: 10dB
 NF: 1.2dB
 Ptot: 290mW



NEC FHX14LG

Gain: 13dB
 NF: 0.55dB
 Ptot: 180mW
